

**BAROSSA:  
BEST BY BIKE**

There is no better way to explore Barossa's hand crafted wines, distinctive regional food, wine and rich heritage than by bike. Its high-quality sealed cycling and walking network extends 40 kilometres from Angaston to Gawler via the three main townships of Nuriootpa, Tanunda and Lyndoch.

This network extends to surrounding towns leading travellers on a journey of discovery. Rural landscapes, hidden attractions and expansive views.

ADVANCED

INTERMEDIATE

EASY

TRAIL GRADES

Nuriootpa is the commercial hub of the Barossa and locally known offers a diversity of retail outlets, eateries, and a scenic riverside walk through Linear Park.

Nuriootpa's Tolley Reserve and playground is great for families. The ride to Tanunda is mostly flat terrain with many interesting sites en-route including wineries, historic buildings and the entrance to the iconic Seppeltsfield Road and Para Road Wine Path.

Tanunda is known as the 'heritage heart of the Barossa' and retains all the village charm and character of yesterday.

The town features historic buildings and churches, Heritage Trail, Regional Gallery, Barossa Museum, bike shop, a brewery, retail therapy and a thriving al fresco cafe culture, making it a perfect place to unwind. Tanunda is also home to the Barossa Visitor Centre offering cycle hire and facilities and a range of visitor services.

90%

10%

90%

10%

**NURIOOTPA TO TANUNDA (7KM)**

Saturday morning) and a variety of cellar doors.

gardens, Mengler Hill Sculpture Park, Barossa Farmers Market (held each families, including Barossa Bushgardens native plant nursery and display People venturing off the path will discover many attractions for visitors and and rolling vineyards that symbolise the Barossa.

easy descent to Nuriootpa, affording panoramic views over the Valley floor completed in 1911 and is listed as a State Heritage Place. From here it's an Offering ample parking, the historic Angaston Railway Station was central to the region's wine production. 'Nurt' as it's home to a variety of cafes, a bike shop, cheesemaker, Italian cooking school, wine bars, cellar doors, B&Bs and boutique retailers.

70%

30%

70%

30%

**ANGASTON TO NURIOOTPA (6KM)**

Angaston is one of the region's highest townships and

ADVANCED

INTERMEDIATE

EASY

TRAIL GRADES

The Barossa Council officially opened the Angaston-Nuriootpa Bike Path in 2010. Adelaide by car, or catch the train to Gawler and connect with the Jack Bobridge Track or LinkSA bus service.

For more details visit LinkSA bus service.

The Jack Bobridge Track opened in 2013, completing Council's 40km continuous shared use path across the Valley floor.

**HISTORY**

Altona Landcare Reserve is a must-see for nature lovers before making the picturesque descent into Lyndoch. The route features an array of restaurants, wineries, Tanunda Pines Golf Club and high-end accommodation, providing a myriad of options for locals and holiday-makers alike.

Midway between Tanunda and Lyndoch is Rowland Flat, best known for its proximity to Jacob's Creek – the site of the Barossa's first commercial vine plantings in 1847 and an ultramodern cellar door offering cycle hire and facilities.

Varying in its degree of difficulty, this leg of the Jack Bobridge Track showcases some of the state's most beautiful natural terrain. Every turn offers a new surprise as towering gums give way to sweeping vistas and vineyards, against the backdrop of the Barossa Ranges. Kangaroos, echidnas and birdlife abound, along with a collection of well-known wineries and cellar doors to break the journey.

Jack Bobridge Track (14KM)

55%

21%

55%

21%



20%

53%

27%

20%

53%

27%

**LAVENDER FARM LOOP (14km)**

The loop traverses the foothills of the Barossa Ranges and is an undulating ride linking Barossa Helicopters, Lyndoch Lavender Farm, Dairyman's Cottage farm accommodation, God's Hill Wines and Dutschke Wines. This loop can be linked to the Steingarten Loop for a longer and more challenging ride.

22%

48%

30%

22%

48%

30%

**MAWSON TRAIL MEANDER (10km)**

This linear ride can supplement the Jack Bobridge Track to make a loop by following a ridgeline on the Western Barossa rim. While there are some short climbs to get up onto the rim the ride then becomes a series of steady rises that will reward you with some of the best views of the Barossa's rural landscape. This ride connects Tanunda via Smith Road or Jane Place.

15%

44%

41%

15%

44%

41%

**GOMERSAL LOOP (11km)**

Linking Lyndoch to Seppeltsfield, this route takes you off the normal tourist routes using local farm roads that feature broad acres and big skies. Autumn through to late Spring are the best times to experience this route, however if you venture off this route in Winter you are likely to get stuck in the mud if you use Hoklas Road so a detour onto Gomersal Road is recommended.

12%

62%

26%

12%

62%

26%

**STEINGARTEN LOOP (10km)**

Perched on top of a hill is the famous Steingarten vineyard. Steingarten or 'Stone Garden' is a hint of the features of this Hill-top look out providing expansive landscape views of the Western Barossa and the Jacob's Creek catchment. This loop is for the fit and more adventurous and can be subject to wind exposure so check the weather before you ride. Either direction will involve some challenging climbs and fast descents. Cycling the loop in a clockwise direction via Steingarten Road from Rowland Flat is easier than via Trial Hill Road which is an appropriate name. Either direction links to the Jack Bobridge Track.

15%

44%

41%

15%

44%

41%

**GOMERSAL LOOP (11km)**

Linking Lyndoch to Seppeltsfield, this route takes you off the normal tourist routes using local farm roads that feature broad acres and big skies. Autumn through to late Spring are the best times to experience this route, however if you venture off this route in Winter you are likely to get stuck in the mud if you use Hoklas Road so a detour onto Gomersal Road is recommended.

ADVANCED

INTERMEDIATE

EASY

TRAIL GRADES

The Barossa is located about one hour from Adelaide by car, or catch the train to Gawler and connect with the Jack Bobridge Track or LinkSA bus service.

For more details visit LinkSA bus service.

The Jack Bobridge Track opened in 2013, completing Council's 40km continuous shared use path across the Valley floor.

**HISTORY**

Altona Landcare Reserve is a must-see for nature lovers before making the picturesque descent into Lyndoch. The route features an array of restaurants, wineries, Tanunda Pines Golf Club and high-end accommodation, providing a myriad of options for locals and holiday-makers alike.

Midway between Tanunda and Lyndoch is Rowland Flat, best known for its proximity to Jacob's Creek – the site of the Barossa's first commercial vine plantings in 1847 and an ultramodern cellar door offering cycle hire and facilities.

Varying in its degree of difficulty, this leg of the Jack Bobridge Track showcases some of the state's most beautiful natural terrain. Every turn offers a new surprise as towering gums give way to sweeping vistas and vineyards, against the backdrop of the Barossa Ranges. Kangaroos, echidnas and birdlife abound, along with a collection of well-known wineries and cellar doors to break the journey.

Jack Bobridge Track (14KM)

55%

21%

55%

21%

ADVANCED

INTERMEDIATE

EASY

TRAIL GRADES

The Barossa is located about one hour from Adelaide by car, or catch the train to Gawler and connect with the Jack Bobridge Track or LinkSA bus service.

For more details visit LinkSA bus service.

The Jack Bobridge Track opened in 2013, completing Council's 40km continuous shared use path across the Valley floor.

**HISTORY**

Altona Landcare Reserve is a must-see for nature lovers before making the picturesque descent into Lyndoch. The route features an array of restaurants, wineries, Tanunda Pines Golf Club and high-end accommodation, providing a myriad of options for locals and holiday-makers alike.

Midway between Tanunda and Lyndoch is Rowland Flat, best known for its proximity to Jacob's Creek – the site of the Barossa's first commercial vine plantings in 1847 and an ultramodern cellar door offering cycle hire and facilities.

Varying in its degree of difficulty, this leg of the Jack Bobridge Track showcases some of the state's most beautiful natural terrain. Every turn offers a new surprise as towering gums give way to sweeping vistas and vineyards, against the backdrop of the Barossa Ranges. Kangaroos, echidnas and birdlife abound, along with a collection of well-known wineries and cellar doors to break the journey.

Jack Bobridge Track (14KM)

55%

21%

55%

21%



ADVANCED

INTERMEDIATE

EASY

TRAIL GRADES

The Barossa is located about one hour from Adelaide by car, or catch the train to Gawler and connect with the Jack Bobridge Track or LinkSA bus service.

For more details visit LinkSA bus service.

The Jack Bobridge Track opened in 2013, completing Council's 40km continuous shared use path across the Valley floor.

**HISTORY**

Altona Landcare Reserve is a must-see for nature lovers before making the picturesque descent into Lyndoch. The route features an array of restaurants, wineries, Tanunda Pines Golf Club and high-end accommodation, providing a myriad of options for locals and holiday-makers alike.

Midway between Tanunda and Lyndoch is Rowland Flat, best known for its proximity to Jacob's Creek – the site of the Barossa's first commercial vine plantings in 1847 and an ultramodern cellar door offering cycle hire and facilities.

Varying in its degree of difficulty, this leg of the Jack Bobridge Track showcases some of the state's most beautiful natural terrain. Every turn offers a new surprise as towering gums give way to sweeping vistas and vineyards, against the backdrop of the Barossa Ranges. Kangaroos, echidnas and birdlife abound, along with a collection of well-known wineries and cellar doors to break the journey.

Jack Bobridge Track (14KM)

55%

21%

55%

21%

ADVANCED

INTERMEDIATE

EASY

TRAIL GRADES

The Barossa is located about one hour from Adelaide by car, or catch the train to Gawler and connect with the Jack Bobridge Track or LinkSA bus service.

For more details visit LinkSA bus service.

The Jack Bobridge Track opened in 2013, completing Council's 40km continuous shared use path across the Valley floor.

**HISTORY**

Altona Landcare Reserve is a must-see for nature lovers before making the picturesque descent into Lyndoch. The route features an array of restaurants, wineries, Tanunda Pines Golf Club and high-end accommodation, providing a myriad of options for locals and holiday-makers alike.

Midway between Tanunda and Lyndoch is Rowland Flat, best known for its proximity to Jacob's Creek – the site of the Barossa's first commercial vine plantings in 1847 and an ultramodern cellar door offering cycle hire and facilities.

Varying in its degree of difficulty, this leg of the Jack Bobridge Track showcases some of the state's most beautiful natural terrain. Every turn offers a new surprise as towering gums give way to sweeping vistas and vineyards, against the backdrop of the Barossa Ranges. Kangaroos, echidnas and birdlife abound, along with a collection of well-known wineries and cellar doors to break the journey.

Jack Bobridge Track (14KM)

55%

21%

55%

21%

ADVANCED

INTERMEDIATE

EASY

TRAIL GRADES

The Barossa is located about one hour from Adelaide by car, or catch the train to Gawler and connect with the Jack Bobridge Track or LinkSA bus service.

For more details visit LinkSA bus service.

The Jack Bobridge Track opened in 2013, completing Council's 40km continuous shared use path across the Valley floor.

**HISTORY**

Altona Landcare Reserve is a must-see for nature lovers before making the picturesque descent into Lyndoch. The route features an array of restaurants, wineries, Tanunda Pines Golf Club and high-end accommodation, providing a myriad of options for locals and holiday-makers alike.

Midway between Tanunda and Lyndoch is Rowland Flat, best known for its proximity to Jacob's Creek – the site of the Barossa's first commercial vine plantings in 1847 and an ultramodern cellar door offering cycle hire and facilities.

Varying in its degree of difficulty, this leg of the Jack Bobridge Track showcases some of the state's most beautiful natural terrain. Every turn offers a new surprise as towering gums give way to sweeping vistas and vineyards, against the backdrop of the Barossa Ranges. Kangaroos, echidnas and birdlife abound, along with a collection of well-known wineries and cellar doors to break the journey.

Jack Bobridge Track (14KM)

55%

21%

55%

21%

ADVANCED

INTERMEDIATE

EASY

TRAIL GRADES

The Barossa is located about one hour from Adelaide by car, or catch the train to Gawler and connect with the Jack Bobridge Track or LinkSA bus service.

For more details visit LinkSA bus service.

The Jack Bobridge Track opened in 2013, completing Council's 40km continuous shared use path across the Valley floor.

**HISTORY**

Altona Landcare Reserve is a must-see for nature lovers before making the picturesque descent into Lyndoch. The route features an array of restaurants, wineries, Tanunda Pines Golf Club and high-end accommodation, providing a myriad of options for locals and holiday-makers alike.

Midway between Tanunda and Lyndoch is Rowland Flat, best known for its proximity to Jacob's Creek – the site of the Barossa's first commercial vine plantings in 1847 and an ultramodern cellar door offering cycle hire and facilities.

Varying in its degree of difficulty, this leg of the Jack Bobridge Track showcases some of the state's most beautiful natural terrain. Every turn offers a new surprise as towering gums give way to sweeping vistas and vineyards, against the backdrop of the Barossa Ranges. Kangaroos, echidnas and birdlife abound, along with a collection of well-known wineries and cellar doors to break the journey.

Jack Bobridge Track (14KM)

55%

21%

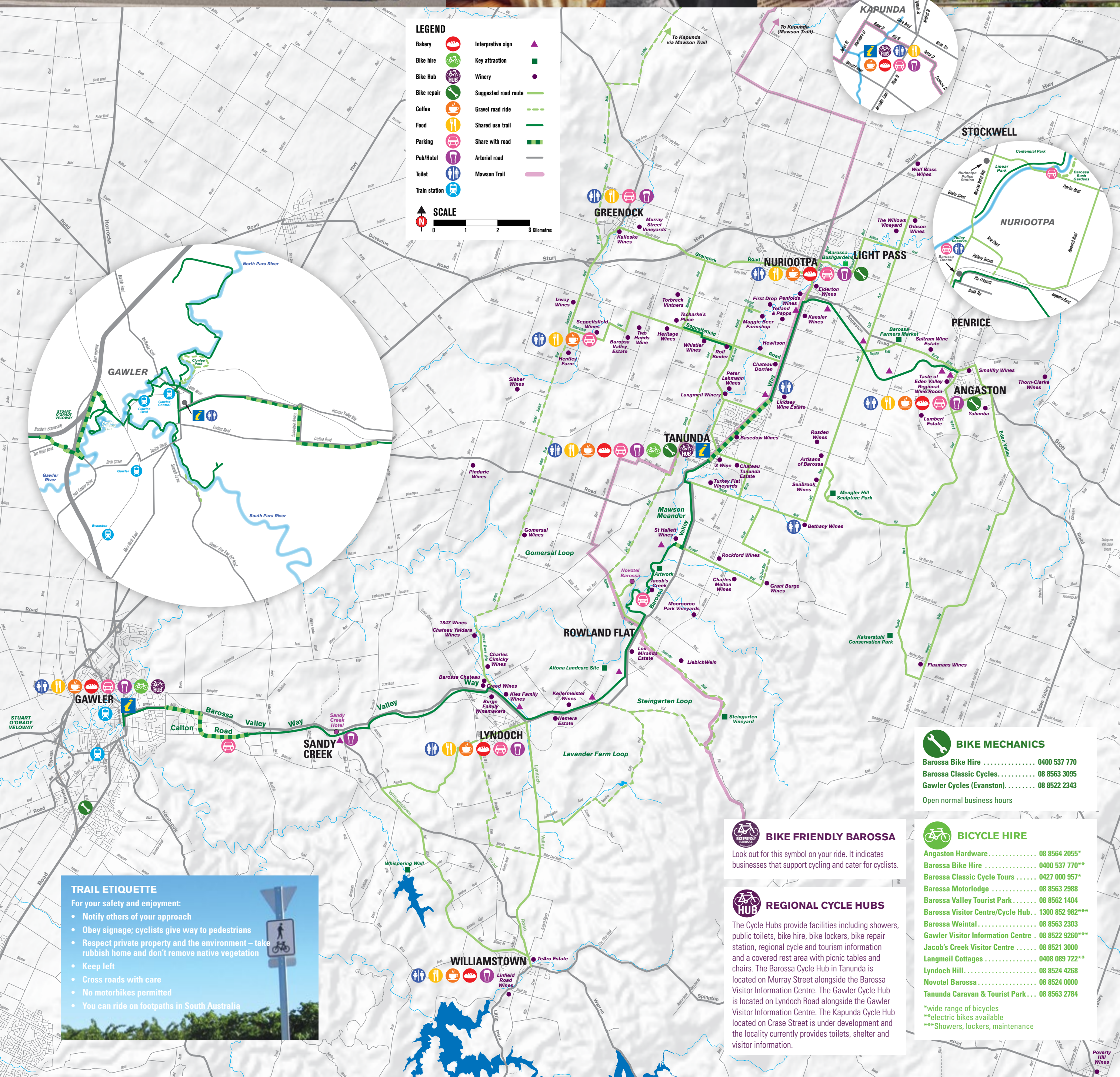
55%

21%





# BAROSSA BY BIKE



Bakery

Bike hire

Bike Hub

Bike repair

Coffee

Food

Parking

Pub/Hotel

Toilet

Train station

Interpretive sign

Key attraction

Winery

Suggested road route

Gravel road ride

Shared use trail

Share with road

Arterial road

Mawson Trail

N

SCALE

0

1

2

3 Kilometres

TRAIL ETIQUETTE

For your safety and enjoyment:

- Notify others of your approach
- Obey signage; cyclists give way to pedestrians
- Respect private property and the environment – take rubbish home and don't remove native vegetation
- Keep left
- Cross roads with care
- No motorbikes permitted
- You can ride on footpaths in South Australia

BIKE MECHANICS

Barossa Bike Hire ..... 0400 537 770

Barossa Classic Cycles..... 08 8563 3095

Gawler Cycles (Evanston)..... 08 8522 2343

Open normal business hours

BIKE FRIENDLY BAROSSA

Look out for this symbol on your ride. It indicates businesses that support cycling and cater for cyclists.

REGIONAL CYCLE HUBS

The Cycle Hubs provide facilities including showers, public toilets, bike hire, bike lockers, bike repair station, regional cycle and tourism information and a covered rest area with picnic tables and chairs. The Barossa Cycle Hub in Tanunda is located on Murray Street alongside the Barossa Visitor Information Centre. The Gawler Cycle Hub is located on Lyndoch Road alongside the Gawler Visitor Information Centre. The Kapunda Cycle Hub located on Crase Street is under development and the locality currently provides toilets, shelter and visitor information.

BICYCLE HIRE

Angaston Hardware..... 08 8564 2055\*

Barossa Bike Hire ..... 0400 537 770\*\*

Barossa Classic Cycle Tours ..... 0427 000 957\*

Barossa Motorlodge ..... 08 8563 2988

Barossa Valley Tourist Park ..... 08 8562 1404

Barossa Visitor Centre/Cycle Hub.. 1300 852 982\*\*\*

Barossa Weintal..... 08 8563 2303

Gawler Visitor Information Centre . 08 8522 9260\*\*\*

Jacob's Creek Visitor Centre ..... 08 8521 3000

Langmeil Cottages ..... 0408 089 722\*\*

Lyndoch Hill..... 08 8524 4268

Novotel Barossa..... 08 8524 0000

Tanunda Caravan & Tourist Park ... 08 8563 2784

\*wide range of bicycles

\*\*electric bikes available

\*\*\*Showers, lockers, maintenance